



## Universal Keyboard Tray Adapter

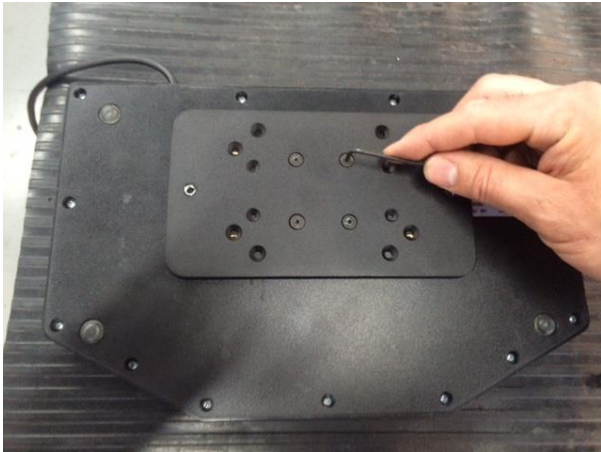
### User Guide

Description	Part Number
Universal Keyboard Tray Adapter	AS7.T004.016

**Note:**

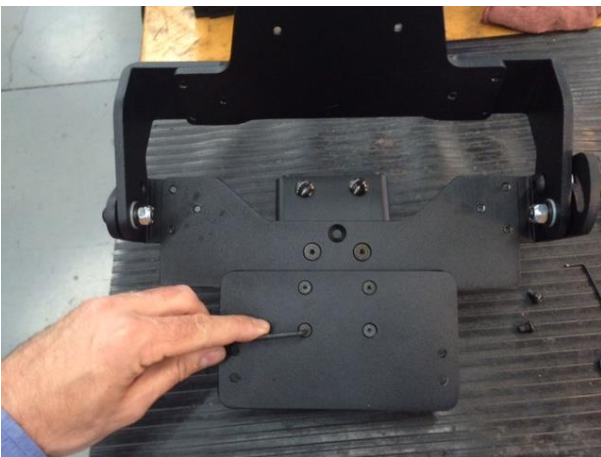
The Universal Keyboard Tray Adapter features the following common mounting patterns:

- VESA 75 (75mm x 75mm)(2.953" x 2.953")
- AMPS (1.19" x 1.50")
- 2" x 4"
- PDRC



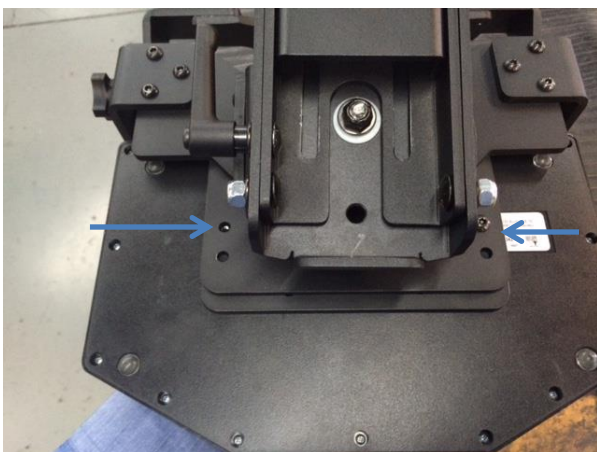
### Step 1:

Attach the adapter plate to your keyboard using the supplied (4) 8-32 x 3/8" flat head screws via whichever hole pattern fits your keyboard.



### Step 2:

Attach the connecting plate to the mounting apparatus you will be using via the supplied (4) 10-24 x 3/8" flat head screws.



### Step 3:

Place the keyboard with adapter plate onto the connecting plate and attach with the supplied (2) 1/4-20 x 3/8" button head screws. There are 2 sets of holes that can be used depending on the size and location of the mounting holes on the keyboard.

Mount shown upside down for clarity



The keyboard mount is now ready for use.



For more info visit: [www.precisionmounts.com](http://www.precisionmounts.com)

Or call us at 1-888-869-7652

[info@precisionmounts.com](mailto:info@precisionmounts.com)