

ADAPTER PLATE FOR BASELINE PEDESTAL WITH MOUSETRAP

USER GUIDE

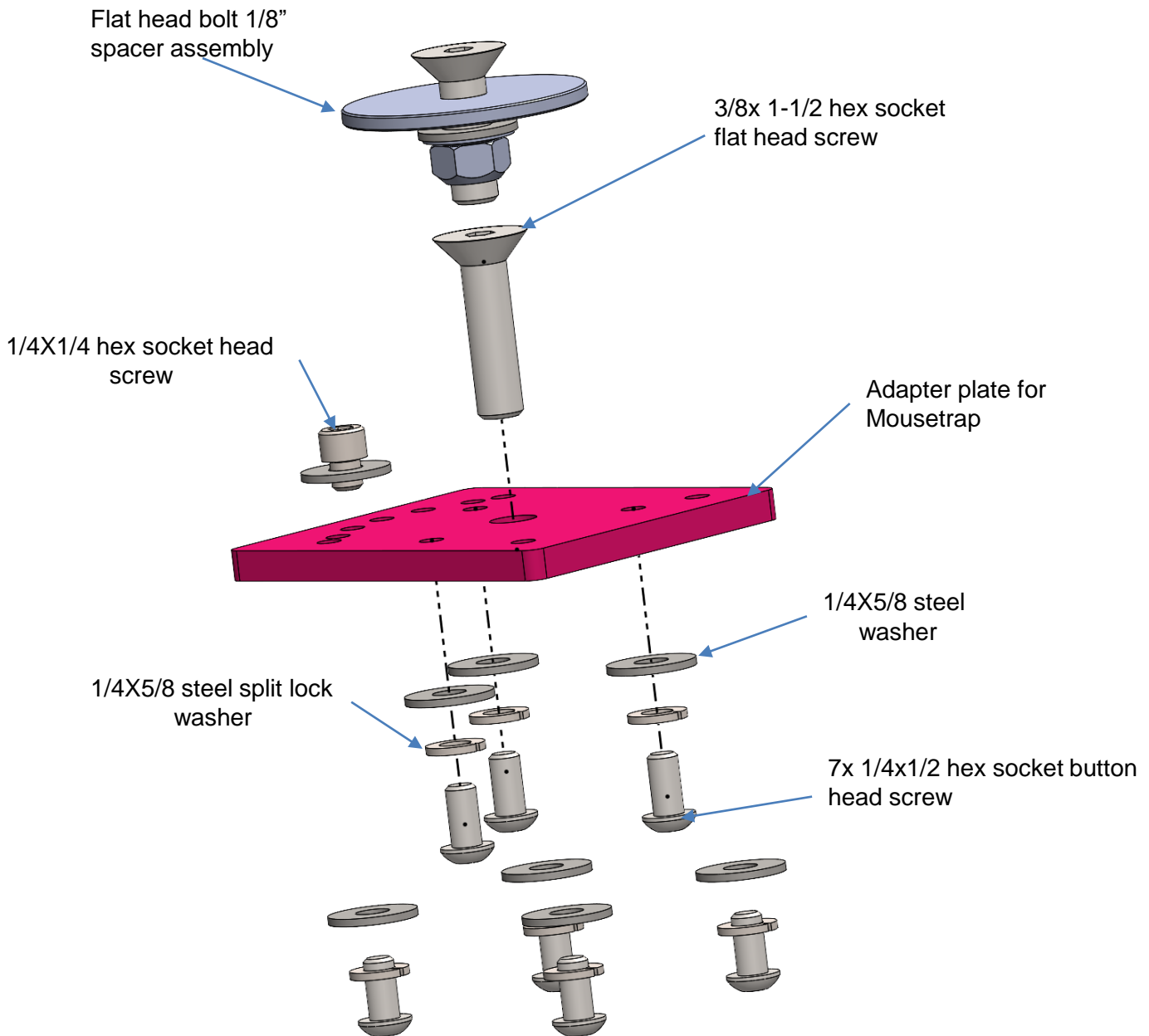
| Description | Part Number |
|--|--------------|
| Adapter plate for baseline pedestal with Mousetrap | AS5.N101.010 |

Product Mounting Disclaimer

Precision Mounting Technologies Ltd (PMT) are not liable under any theory of contract or tort law for any loss, damage, personal injury, special, incidental or consequential damages for personal injury or other damage of any nature arising directly or indirectly as a result of the improper installation or use of its products in vehicle or any other application. In order to safely install and use PMT products full consideration of vehicle occupants, vehicle systems (i.e., the location of fuel lines, brake lines, electrical, drive train or other systems), air-bags and other safety equipment is required. PMT specifically disclaims any responsibility for the improper use or installation of its products not consistent with original vehicle manufactures' specifications and recommendations, PMT product instruction sheets, or workmanship standards as endorsed through PMT policies and EULA.



DESCRIPTION OF PARTS

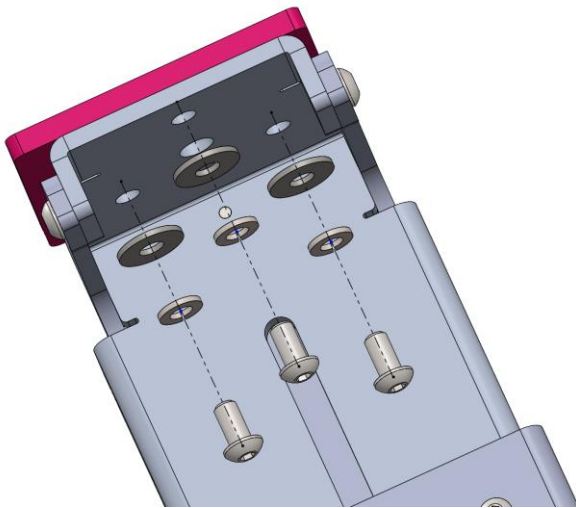


INSTALLATION

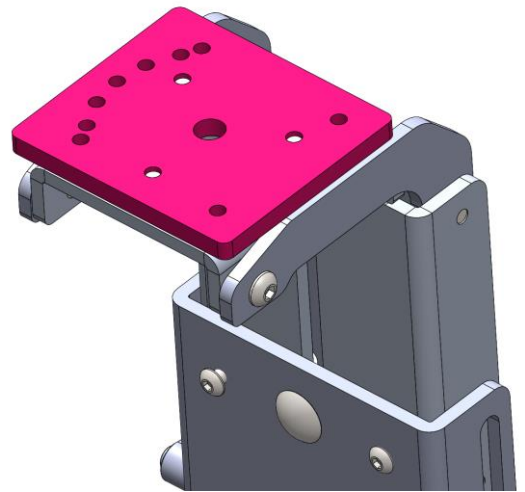
This assembly adapter plate for baseline pedestal with mousetrap AS5.N101.010 has to be used to mount the baseline pedestal AS4.P500.002 with the PMT mousetrap motion mount.

Below are the instructions to assemble:

Step 1: Assemble the adapter plate for mousetrap 50.N101.002 with the pedestal as shown below in Pic. 1; use the three 1/4x1/2 hex socket button head screw along with the 1/4x5/8 steel split lock washer and 1/4x5/8 steel washer, use 5/32 size hexagon socket tool to fasten the hardware with a torque 60-65 in-lbs, blue loctite 242 can be used to reduce risk of the screws backing off.



Pic. 1



Pic. 2

Step 2: Please follow the PMT mousetrap motion mount user guide to install the mousetrap on to the baseline pedestal, this can be found on the Mousetrap web pages at precisionmounts.com