



TrimLine Vehicle Dock For Panasonic Toughbook 40 Laptop Computers

User Guide

This user guide is for the following models:

Description	PMT Part #
TrimLine Dock for TB40 Laptop NPT Lite	AS7.P040.100
TrimLine Dock for TB40 Laptop QPT Lite	AS7.P040.102
TrimLine Cradle for TB40 Laptop	AS7.P040.104
TrimLine Dock for TB40 Laptop NPT Full	AS7.P040.110
TrimLine Dock for TB40 Laptop QPT Full	AS7.P040.112

General Instructions

SAFETY:

- Safety is dependent on the proper installation and servicing of this docking station. It is important to read and follow all instructions before installing this product.
- Proper installation requires a good understanding of automotive electrical systems and is recommended to be performed by qualified technicians only.
- There are no adjustments or user serviceable parts within the docking station. Opening the docking station will void the product warranty
- Do not install equipment or route wires in the deployment path of any air bag, or where it may interfere with critical safety or operating controls of any vehicle.

POWER:

- The power input should be 15.0Vdc / 8 A. The dock is meant to operate on 14.5 Vdc to 16 Vdc. Use a recommended power supply for the dock. Panasonic recommends using a Lind Auto Adapter (PMT part#: PS001) for this dock.

WIRING:

- PMT does not recommend relying on a cigarette socket adaptor for powering vehicle docks. We recommend hard wiring the power adapter using a good clean ground direct from the vehicle battery neg(-) post, and pos(+) supply from a fused 12vdc location also directly from the vehicle battery. All peripherals connecting to the docking station requiring external power should get power and ground from the same location as the dock.
- Visit www.precisionmounts.com/support/installation-user-guides.html for a copy of our general wiring and troubleshooting guide.

Proper Use and Care:

- Proper care and use of this product is critical to maximize safety and to prevent damage to the docking station and laptop.
- Do not store, place or drag any object on top of the docking station.
- Visually inspect the docking station and laptop for any defect before using the dock or docking the laptop. Do not use if damaged.
- Do not attempt to dock a computer or dock with wet contacts

Environmental:

- Storage: -20°C to 60°C (-4°F to 140°F)
- Operating: -10°C to 50°C (14°F to 122°F)

SERVICING [ENTRETIEN]:

- If the dock does not work as intended, please contact PMT for troubleshooting or to schedule a service. *[Si le dock ne fonctionne pas comme prévu, contactez PMT pour le dépannage ou pour planifier un service.]*
- Servicing of the dock should be only done by authorized service center personnel. Unauthorized servicing of the dock will void its warranty. *[L'entretien du dock ne doit être effectué que par le personnel du centre de service autorisé. Un entretien non autorisé du dock annulera sa garantie.]*

Product Mounting Disclaimer

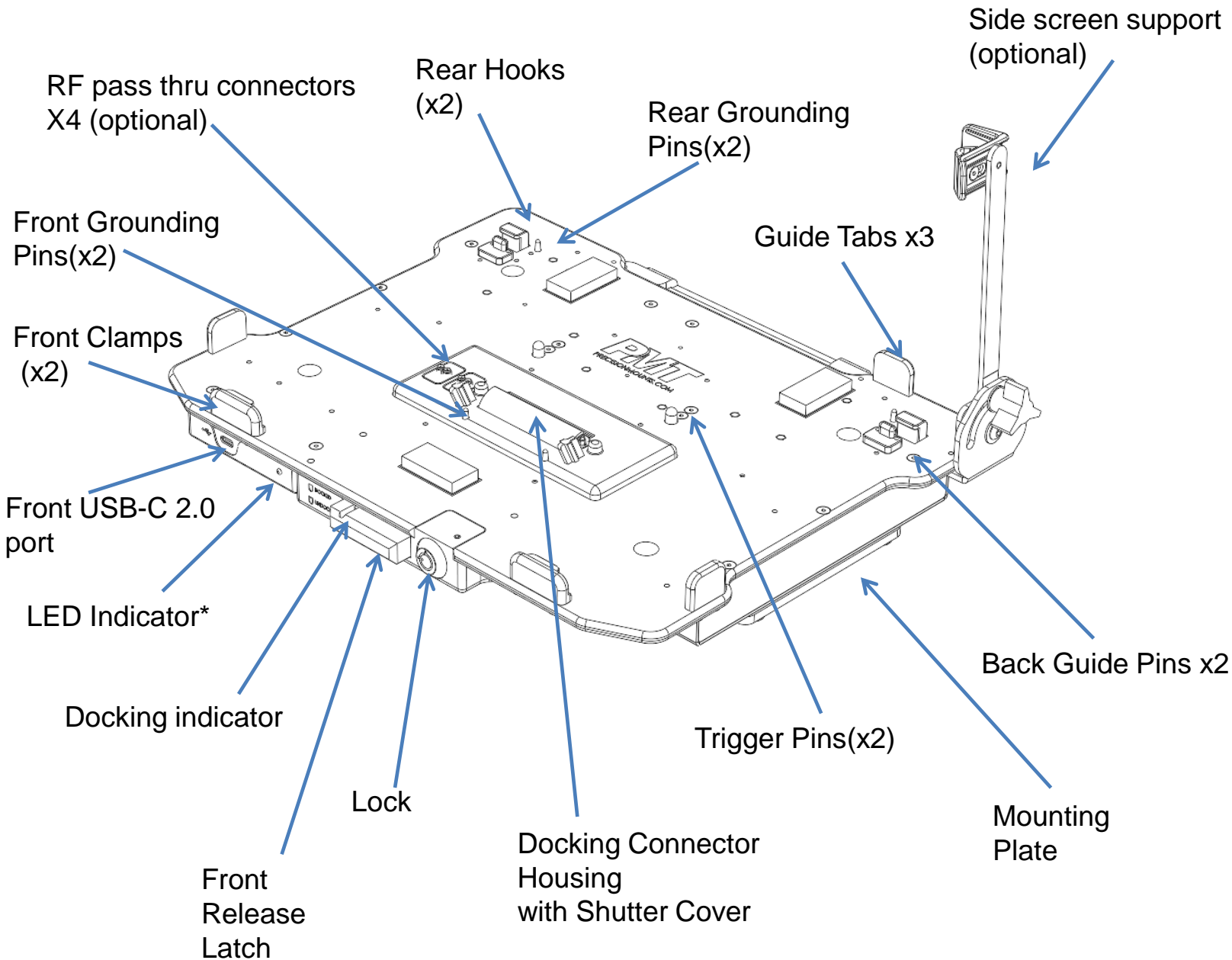
Precision Mounting Technologies Ltd (PMT) are not liable under any theory of contract or tort law for any loss, damage, personal injury, special, incidental or consequential damages for personal injury or other damage of any nature arising directly or indirectly as a result of the improper installation or use of its products in vehicle or any other application. In order to safely install and use PMT products full consideration of vehicle occupants, vehicle systems (i.e., the location of fuel lines, brake lines, electrical, drive train or other systems), air-bags and other safety equipment is required. PMT specifically disclaims any responsibility for the improper use or installation of its products not consistent with original vehicle manufactures specifications and recommendations, PMT product instruction sheets, or workmanship standards as endorsed through PMT policies and EULA.



Description of Parts and Layout

Note: All pictures used in this guide are of Quad Pass Thru (QPT) “Full” docking station model (Part # AS7.P040.112). However, processes and information relate to other variants of the same dock mentioned in previous page.

Front View



*LED Indicator legend:

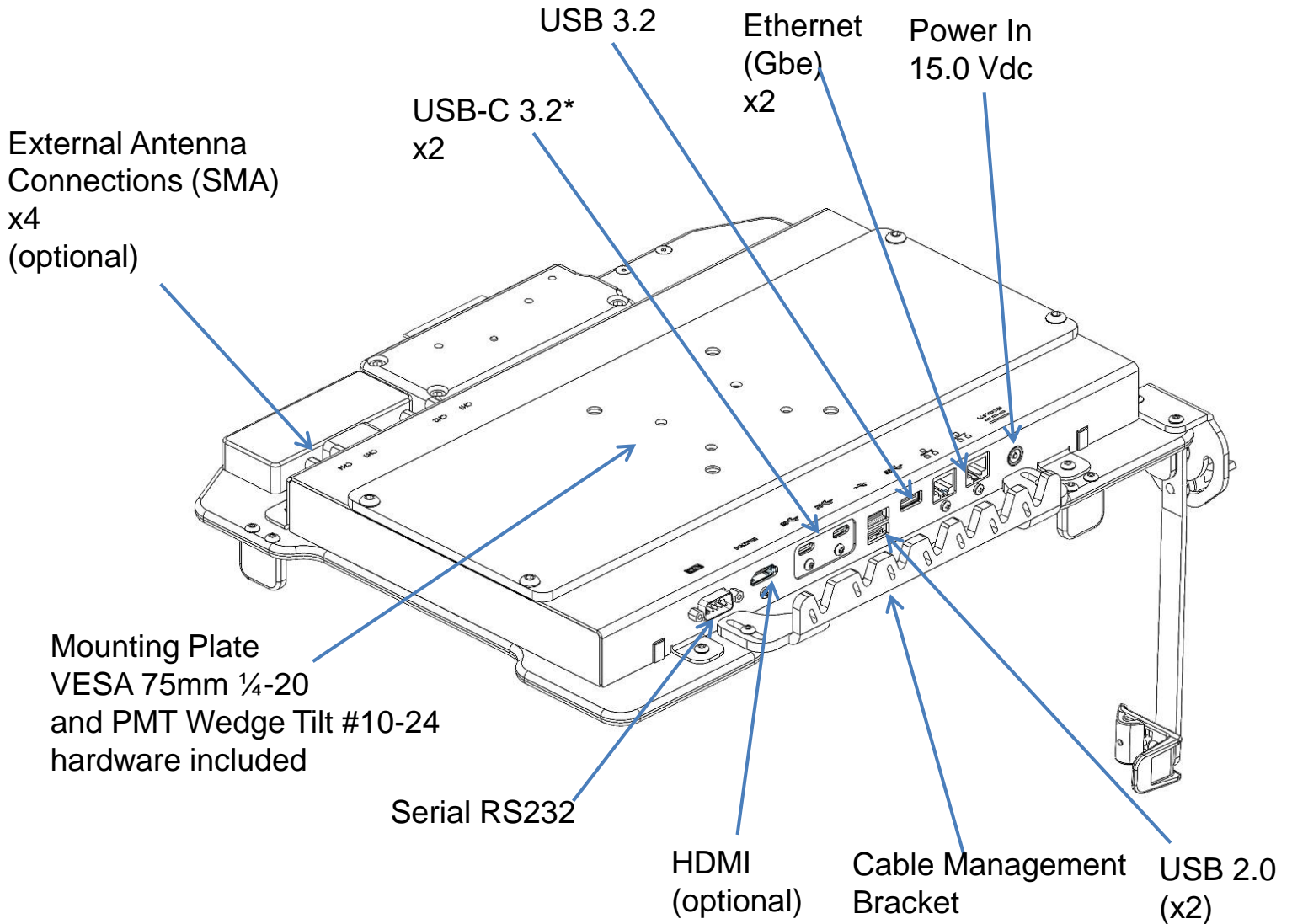
Solid Green: Laptop docked, and dock has power

Blinking Green: Laptop docked, dock does not have power

No light: Laptop not docked

Description of Parts Continued

Rear View (with mounting plate attached)

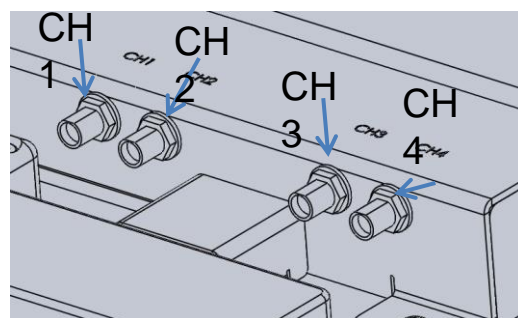
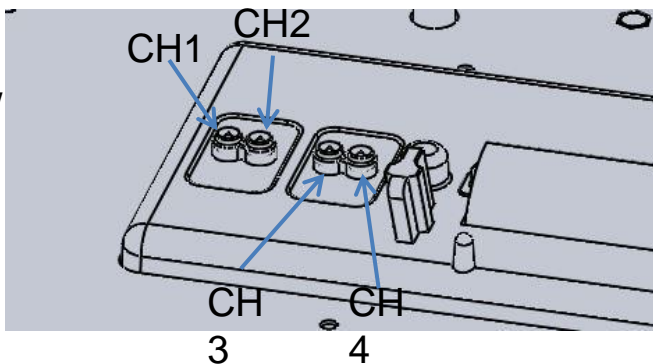


*DP Alternate mode (4K60p) available for "Full" docks only.

Only one port can be used for display output at a time, with the port closest to the HDMI port taking priority.

RF antenna pass through connection identification/mapping

Top View



Bottom view SMA connections

Docking the Laptop

Step 1:

Ensure that the dock is unlocked and unlatched. If locked, insert key and rotate lock 90 degrees counter-clockwise. If latched, push the front release latch such that the back hooks move all the way out. An audible noise will be heard once fully un-latched



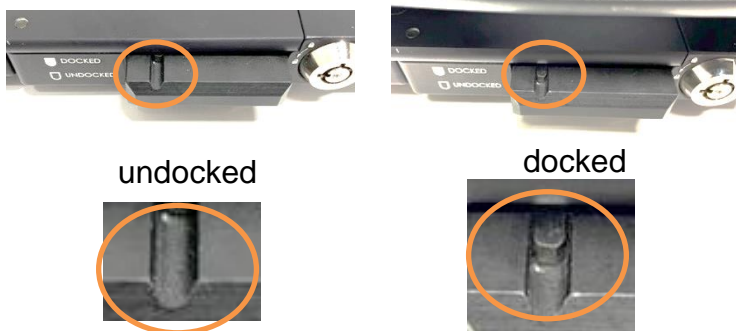
Step 2:

Lead the front of the laptop into the front hooks on the dock such that the pockets on the laptop line up with the front hooks. The guide tabs should help align the laptop as well. Take care while positioning the laptop to ensure proper alignment and to prevent damage



Step 3:

Push on the back corners of the laptop so that rear hooks latch*. A click sound should be heard when the rear hooks latch, and the docking indicator on the front of the dock will show confirmation if docked correctly



***Do not force docking if resistance is felt. Stop and check alignment before proceeding**

Step 4:

For additional security and theft deterrence, insert and rotate key 90 degrees clockwise and remove the key to lock the laptop in the docking station. The laptop is only fully secure once the key is removed.



Step 5:

(optional) If equipped with a side screen support, gently position the screen so that the screen support tab rests against the side of the laptop screen. Adjust screen support tension with the adjustment knob as needed.

Undocking the Laptop

Step 1:

Ensure that the dock is unlocked. If locked, insert key and rotate lock 90 degrees counter-clockwise.



Step 2:

Use your thumb to push in the front release latch on the front of the dock. This will push the rear clamps out and the laptop will eject with a small click sound.



Step 3:

Once the laptop ejects, gently pull the laptop out of the dock. Take care not to drag the laptop or any other device across the top surface of the dock to prevent damage to the pins.



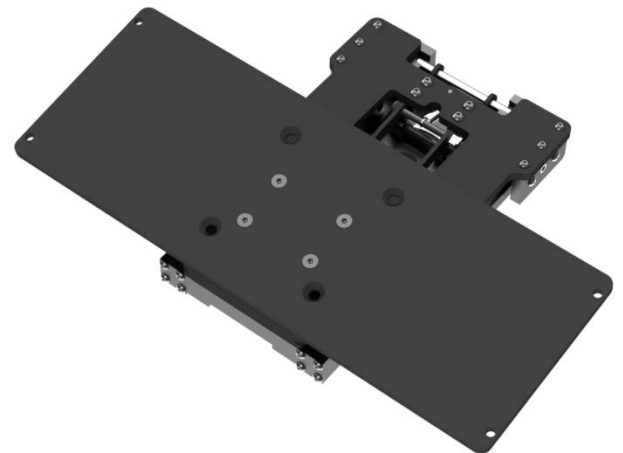
Cable Management & Mounting

Connect all cables securely to dock connections and use tie straps to secure cables to the cable management bracket. Ensure to leave enough slack in wires exiting the dock so that any positioning adjustments will not strain the cables or connections during use.

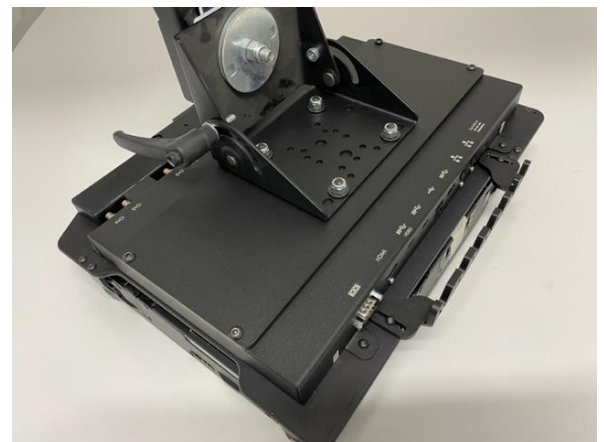
Use tie straps to secure opposite cable ends to another suitable location in the vehicle.



The standard mounting bracket that comes with the vehicle dock features both industry standard VESA 75mm and PMT Wedge Tilt 1.875" x 1.25" bolt patterns. It must first be removed from the dock by unscrewing the 4x #10-24 screws attaching it to the dock. This allows easy mounting to many pre-existing mounts as well as dedicated mounts from PMT. Use the supplied 1/4-20 (for VESA 75) or #10-24 (for PMT Wedge Tilt) flat head screw and hardware for attaching the plate to the mount.



Once the mounting plate is attached to your mount, attach the mounting bracket to the dock using the four supplied #10-24 UNC screws as shown above (after attaching the mounting plate to mount).



Regulatory Certification Information

Regulatory Model #: AS7.P040.112

PMT Model #'s & Description:

AS7.P040.100	Dock-Toughbook 40 Laptop-No RF Lite
AS7.P040.102	Dock-Toughbook 40 Laptop-Quad RF Lite
AS7.P040.104	Cradle-Toughbook 40 Laptop
AS7.P040.110	Dock-Toughbook 40 Laptop-No RF Full
AS7.P040.112	Dock-Toughbook 40 Laptop-Quad RF Full

Certifications and test standards:

EN ISO / IEC 17050-1:2004

CSA C22.2 NO. 62368-1

UL 62368-1

ICES-003(A) / CISPR 32 / EN 50498

ISO 10605

MIL-STD-810G:CHG1

RoHS(2011/65/EU)

Made in Canada

This device complies with Part 15 of the FCC Rules. Operation is subject to the following two conditions. (1) this device may not cause harmful interference, and (2) this device must accept any interference received, including interference that may cause undesired operation.



www.precisionmounts.com

1-888-869-7652 | sales@precisionmounts.com

Precision Mounting Technologies Ltd.

515 58th Ave SE

Calgary, Alberta, Canada, T2H 0P7