



DOCKING STATION FOR PANASONIC TOUGHBOOK® G2

This vehicle docking station is Panasonic TOUGHBOOK® Certified, engineered for maximum user convenience and confidence, dedicated to operate with the Panasonic TOUGHBOOK® G2 tablet computer using latest materials and technologies. Manufactured from high grade aluminum ensures the smallest possible footprint inside a vehicle to offer maximum safety, comfort and use of cabin space for the vehicle operator.

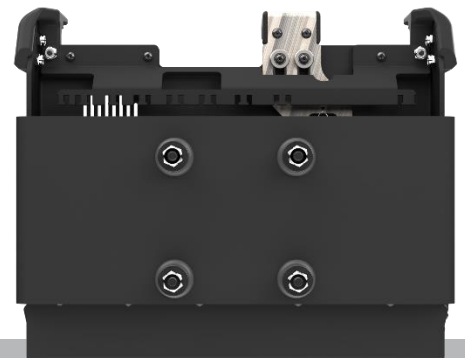
FEATURES

- CNC machined aluminum construction for ultimate rugged performance
- Genuine Panasonic electronics for maximum reliability
- Floating connector pin design for maximum connectivity responsiveness
- Gigabit Ethernet VLAN
- 2 x USB 3.2 5Gbps Type A, rear
- 2 x USB 2.0 Type A, rear
- 2 x USB 2.0 Type A, front (optional)
- Dual HDMI video outputs (optional)
- Optional Dual RF Pass-Through with SMA connectors
- Ergonomic design for safety and usability
- Universal VESA 75 mounting pattern
- Low profile footprint for increased usable cabin space
- Key lockable for added theft deterrence
- Top facing ports with integrated cable management
- One handed operation
- Slots for device cooling fan ventilation
- Compatible with Panasonic TOUGHBOOK® G2 tablets
- 3 year limited warranty



TESTING/CERTIFICATIONS

- Panasonic TOUGHBOOK® Certified
- MIL-STD-810-G: CHG1
- Vibration & Shock
- Cycle – Latch/Unlatch 30,000 cycles
- Shock-Crash Test - Simulated 30mph sled crash test
- Environmental
- FCC, CE, UKCA, RoHS





DOCKING STATION FOR PANASONIC TOUGHBOOK® G2 PART NUMBERS AND TECHNICAL SPECIFICATIONS

ITEM NUMBERS

- | | |
|-----------------|---|
| AS7.P222.100 | - TOUGHBOOK® G2 TABLET FULL NPT DOCK |
| AS7.P222.100-PS | - TOUGHBOOK® G2 TABLET FULL NPT DOCK WITH POWER ADAPTER |
| AS7.P222.102 | - TOUGHBOOK® G2 TABLET FULL DPT DOCK |
| AS7.P222.102-PS | - TOUGHBOOK® G2 TABLET FULL DPT DOCK WITH POWER ADAPTER |
| AS7.P222.104 | - TOUGHBOOK® G2 TABLET CRADLE |
| AS7.P222.104-PS | - TOUGHBOOK® G2 TABLET CRADLE WITH POWER ADAPTER |
| AS7.P222.120 | - TOUGHBOOK® G2 TABLET LITE NPT DOCK |
| AS7.P222.120-PS | - TOUGHBOOK® G2 TABLET LITE NPT DOCK WITH POWER ADAPTER |
| AS7.P222.122 | - TOUGHBOOK® G2 TABLET LITE DPT DOCK |
| AS7.P222.122-PS | - TOUGHBOOK® G2 TABLET LITE DPT DOCK WITH POWER ADAPTER |

PORT REPLICATION

- 1 x RJ45 Ethernet (Gigabit) VLAN
- 2 x USB 3.2 5Gbps Type A, rear
- 2 x USB 2.0 Type A, rear
- 2 x USB 2.0 Type A, front (optional)
- 2 x HDMI (optional)
- 1 x RS-232 (Serial)
- 15 VDC Input
- 2 x RF Pass-Through (SMA) (optional)

WEIGHT	HEIGHT	WIDTH	DEPTH
4.60 – 4.95 lbs	8.99"	11.20"	3.79"

