



## DOCKING STATION FOR DELL RUGGED 7030 TABLET

### USER GUIDE

Description	Part Number
Docking Station for Dell Rugged 7030 Tablet Lite	AS7.D922.100
Docking Station for Dell Rugged 7030 Tablet Full	AS7.D922.110
Cradle for Dell Rugged 7030 Tablet	AS7.D922.104
Docking Station for Dell Rugged 7030 Tablet Lite with Power Adapter	AS7.D922.100-PS
Docking Station for Dell Rugged 7030 Tablet Lite with Isolated 20-60V Power Adapter	AS7.D922.100-PSF1
Docking Station for Dell Rugged 7030 Tablet Full with Power Adapter	AS7.D922.110-PS
Cradle for Dell Rugged 7030 Tablet with Power Adapter	AS7.D922.104-PS



# GENERAL INSTRUCTIONS

## SAFETY:

- Safety is dependent on the proper installation and servicing of this docking station. It is important to read and follow all instructions before installing this product.
- Proper installation requires a good understanding of automotive electrical systems and is recommended to be performed by qualified technicians only.
- There are no adjustments or user serviceable parts within the docking station. Opening the docking station will void the product warranty
- Do not install equipment or route wires in the deployment path of any air bag, or where it may interfere with critical safety or operating controls of any vehicle.

## POWER:

- The power input should be 19.5 Vdc / 4.5 A. Use a Dell recommended power adapter for the dock. PMT recommends using a Lind Auto Adapter, PMT part#: PS005 for the Docking Station or PS040 for the Cradle when installed using an 11-16Vdc input such as in a car/pick up truck or PS024 when installed using a 20-60Vdc input such as in a forklift.

## WIRING:

- PMT does not recommend relying on a cigarette socket adaptor for powering vehicle docks. We recommend hard wiring the power adapter using a good clean ground direct from the vehicle battery neg(-) post, and pos(+) supply from a fused 12Vdc location also directly from the vehicle battery. All peripherals connecting to the docking station requiring external power should get power and ground from the same location as the dock.
- Visit [www.precisionmounts.com/support/installation-user-guides.html](http://www.precisionmounts.com/support/installation-user-guides.html) for a copy of our general wiring and troubleshooting guide.

## Proper Use and Care:

- Proper care and use of this product is critical to maximize safety and to prevent damage to the docking station and tablet.
- Do not store, place, or drag any object on top of the docking station.
- Visually inspect the docking station and tablet for any defect before using the dock or docking the laptop. Do not use if damaged.
- Any modifications made to the docking station could result in adverse performance and damage to the tablet and/or docking station and will void the warranty.
- Do not attempt to dock a computer or dock with wet contacts

## Environmental: TESTED TO

- Storage: -46°C to 85°C (-40°F to 185°F)
- Operating: -30°C to 63°C (-22°F to 145°F)

## SERVICING [ENTRETIEN]:

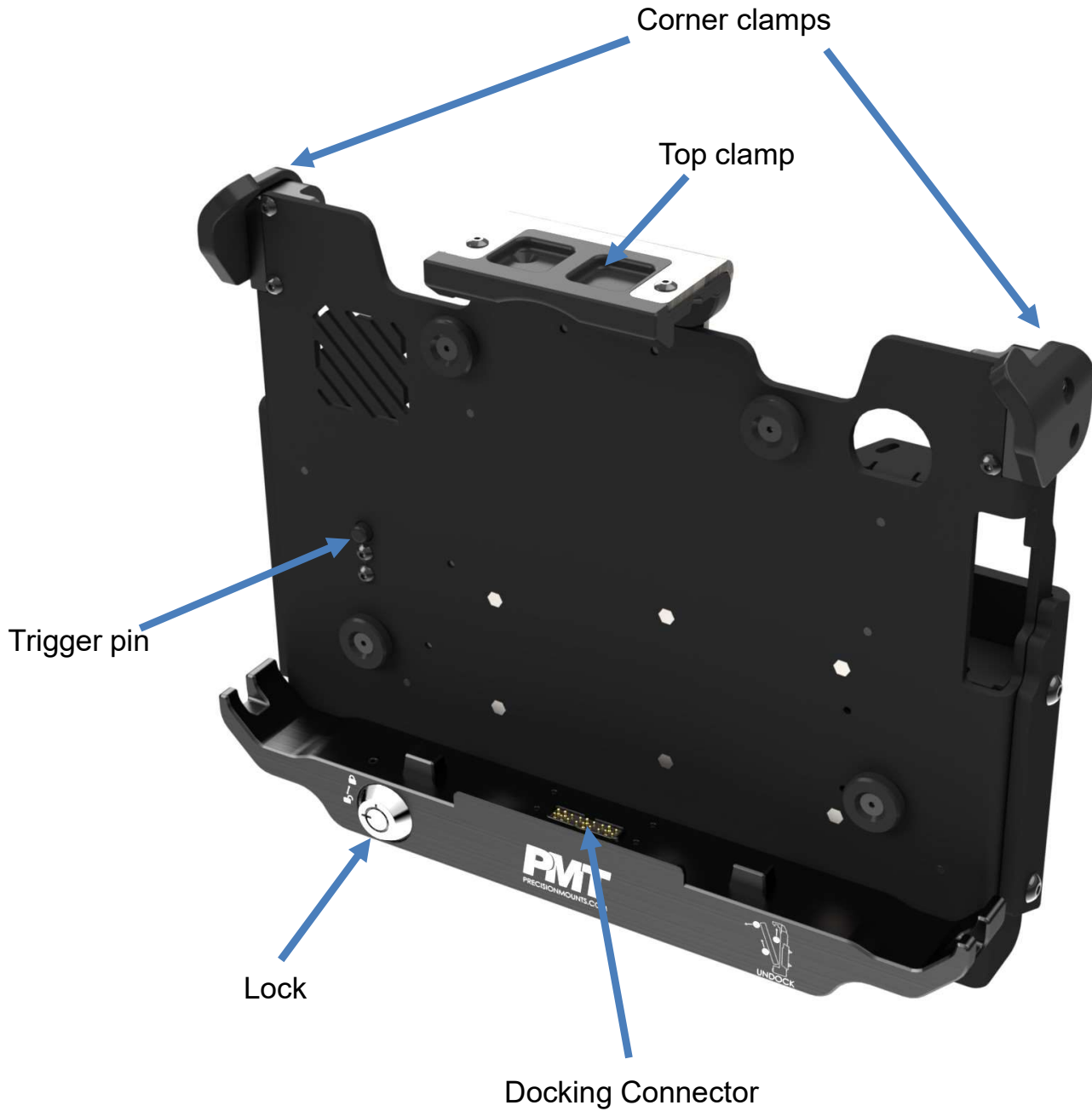
- If the dock does not work as intended, please contact PMT for troubleshooting or to schedule a service. *[Si le dock ne fonctionne pas comme prévu, contactez PMT pour le dépannage ou pour planifier un service.]*
- Servicing of the dock should be only done by authorized service center personnel. Unauthorized servicing of the dock will void its warranty. *[L'entretien du dock ne doit être effectué que par le personnel du centre de service autorisé. Un entretien non autorisé du dock annulera sa garantie.]*

### Product Mounting Disclaimer

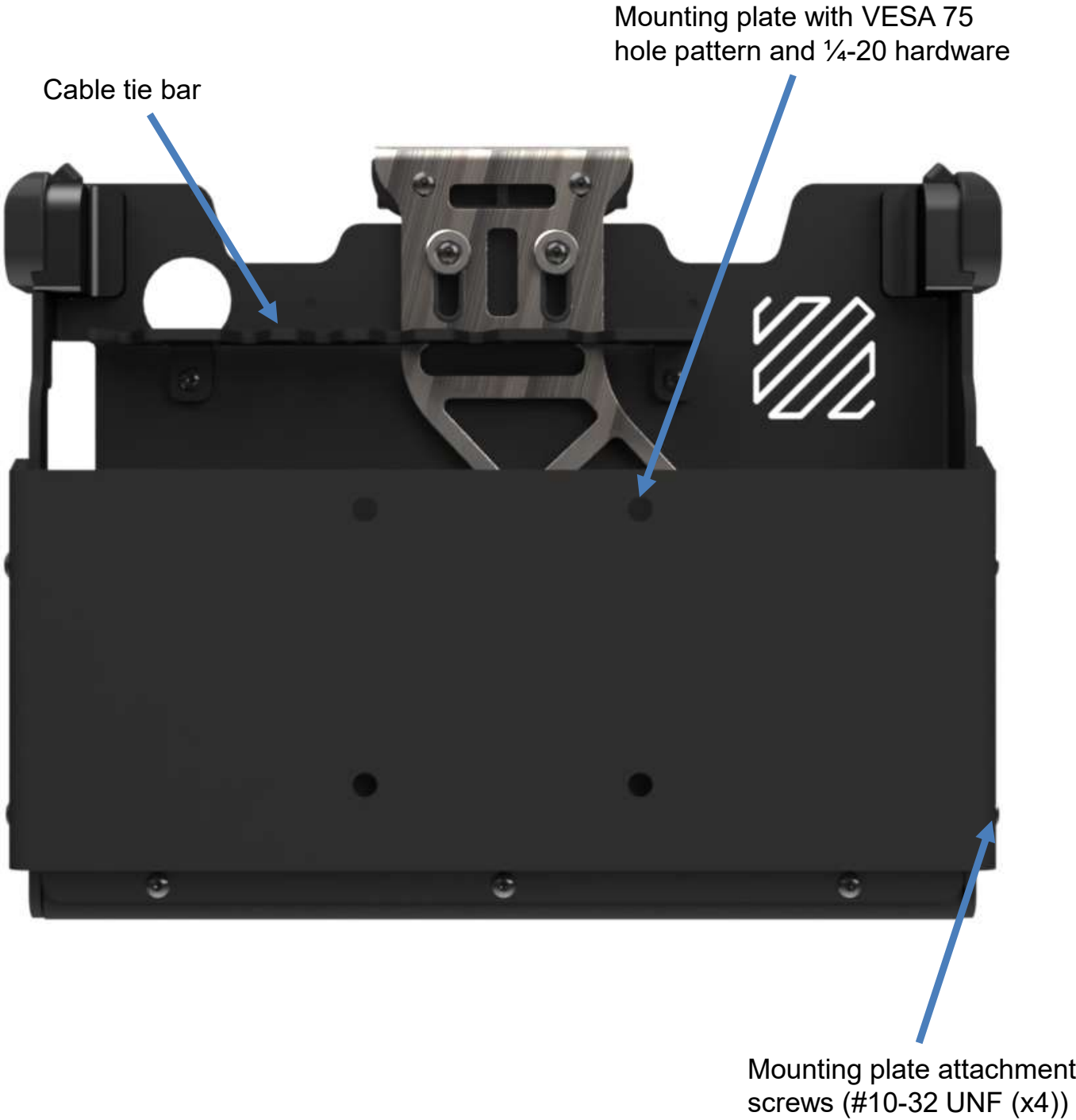
Precision Mounting Technologies Ltd (PMT) are not liable under any theory of contract or tort law for any loss, damage, personal injury, special, incidental or consequential damages for personal injury or other damage of any nature arising directly or indirectly as a result of the improper installation or use of its products in vehicle or any other application. In order to safely install and use PMT products full consideration of vehicle occupants, vehicle systems (i.e., the location of fuel lines, brake lines, electrical, drive train or other systems), air-bags and other safety equipment is required. PMT specifically disclaims any responsibility for the improper use or installation of its products not consistent with original vehicle manufactures' specifications and recommendations, PMT product instruction sheets, or workmanship standards as endorsed through PMT policies and EULA.



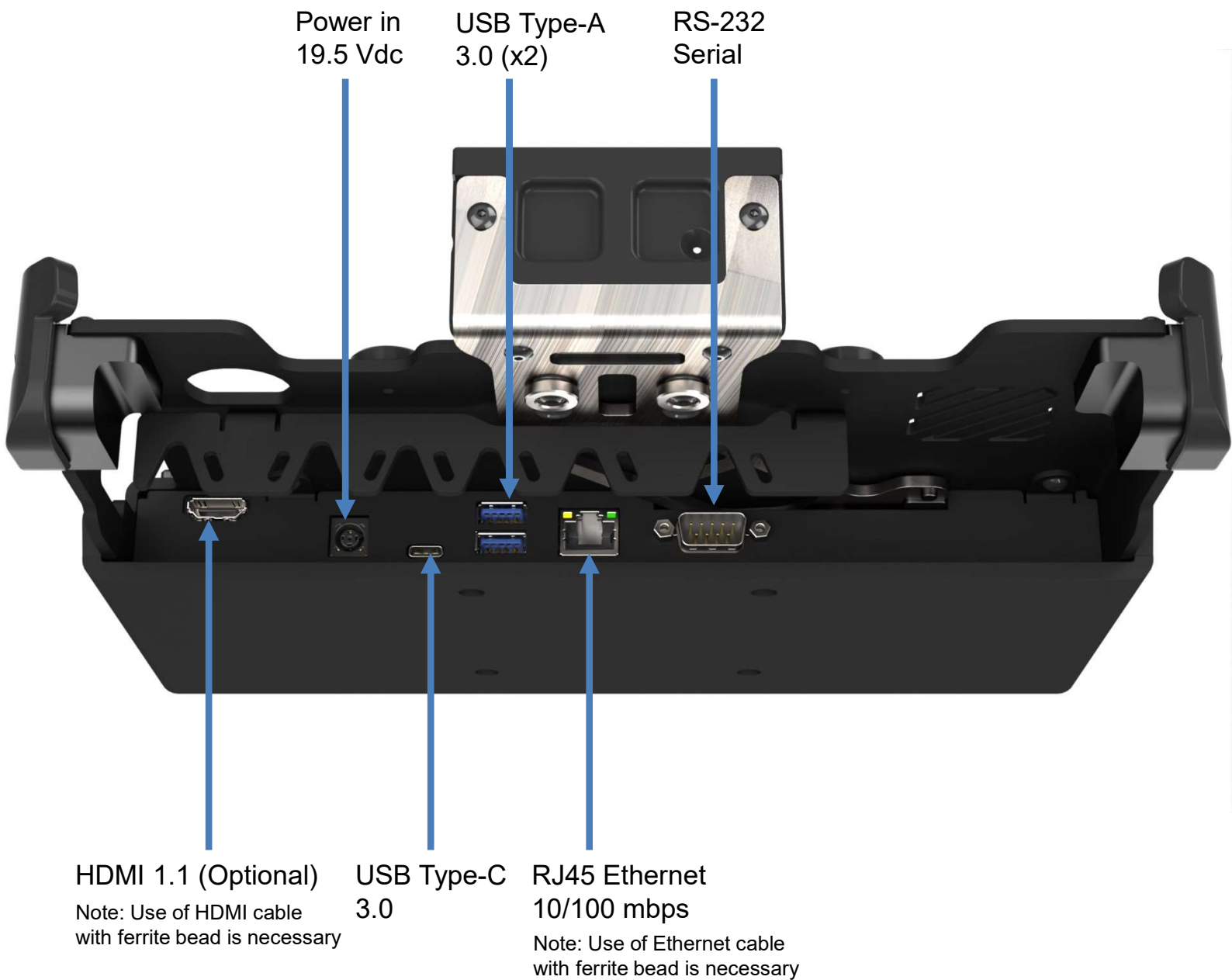
# DESCRIPTION OF PARTS



# DESCRIPTION OF PARTS CONT'D



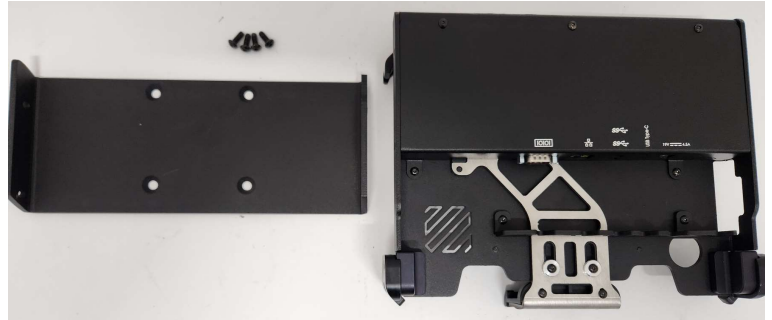
# PORT IDENTIFICATION



# INSTALLATION

## Step 1:

Using a 1/8" Allen/Hex key (wrench), remove the mounting plate from the dock.



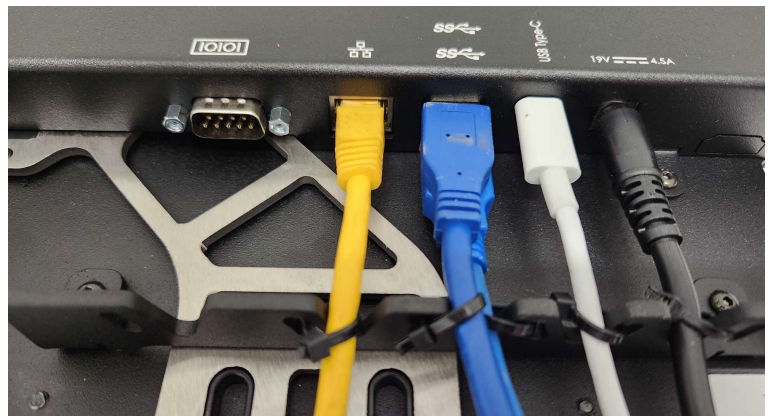
## Step 2:

Install the mounting plate onto mounting infrastructure via the VESA 75 interface and the provided hardware. Be sure to orientate the plate in the correct position. Add the washer and tighten the bolts with the nuts.



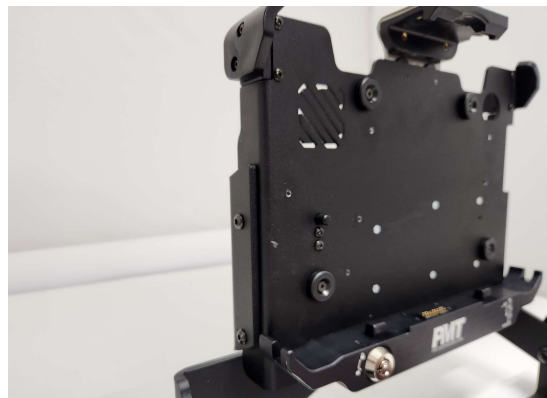
## Step 3:

Connect all required wiring to the dock while utilizing plastic tie straps and the cable tie bar to secure cables/connections. Each cable connecting to the docking station should be secured via a tie strap before exiting the docking station.



## Step 4:

Attach the dock to the mounting plate using the 4x 10-32 UNF button head screws provided.



Tip: Visit our website to search for and review our “General wiring and troubleshooting guide” for further information.

# DOCKING THE TABLET

## Step 1:

Ensure lock is in the unlocked position



## Step 2:

Completely lift the top clamp to the highest location.



## Step 3:

Place tablet bottom edge first against the bottom stoppers. Ensure the tablet is centered in the dock.

Then push back the tablet towards the dock. Ensure the top clamp fully drops down over the front face of the tablet after the tablet has been completely pushed back. If excessive force is required, stop and check alignment and ensure dock is unlocked



## Step 4:

For additional security and theft deterrence, insert key and rotate lock to the locked position as shown.



# UN-DOCKING THE TABLET

## Step 1:

If previously locked, insert key and rotate lock to the unlocked position.



## Step 2:

- a. Using your thumb, push Top Clamp up.
- b. Then pull the top of the tablet away from the dock.



## Step 3:

Once clear of the Top Clamp, lift the tablet out and away from the dock.





# HDMI DRIVER INSTALL GUIDE

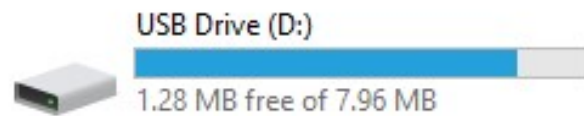
FOR AS7.D922.110 ONLY

## Step 1:

Make sure DC power is being supplied to the docking station and then dock the tablet.

## Step 2:

Open the tablet's file explorer system, in "This PC", open the icon labelled "USB Drive" (this represents the HDMI connector port). It should show in there with approximately less than 10MB space.



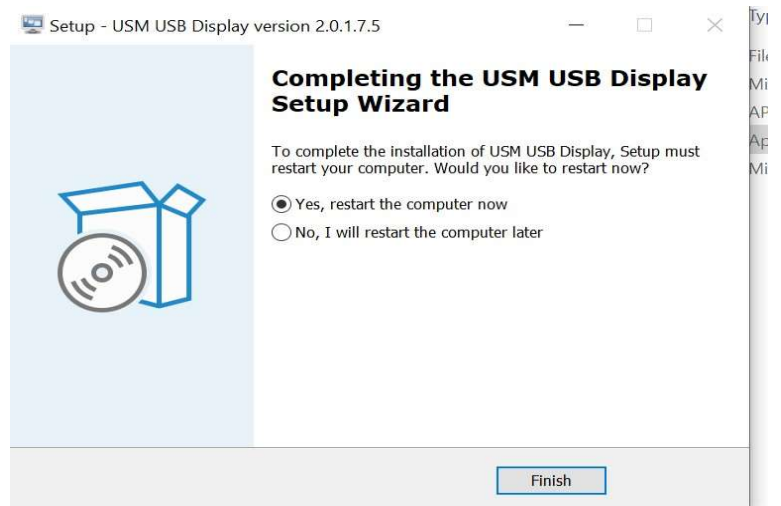
## Step 3:

Open the application file "USMDisplay\_Windows" to begin installation of the HDMI connector port driver.

Name	Date modified	Type	Size
LOST.DIR	12/13/2021 6:51 PM	File folder	
manual	7/25/2022 10:51 AM	Adobe Acrobat D...	74 KB
MSDisplay_Android_V2.0.1.3.apk	7/25/2022 10:51 AM	APK File	2,817 KB
USMDisplay_Windows_V2.0.1.7.5	7/25/2022 10:51 AM	Application	3,332 KB
说明	7/25/2022 10:51 AM	Adobe Acrobat D...	144 KB

## Step 4:

After finishing the installation process, please restart the tablet. The HDMI connector port will now be functional on the docking station.



Regulatory model: AS7.D922.110

### Certifications and test standards:

EN ISO / IEC 17050-1:2004

ICES-003(A) / CISPR 32 / EN 50498

MIL-STD-810H:CHG1

RoHS(2011/65/EU)

UKCA

Made in Canada

This device complies with Part 15 of the FCC Rules. Operation is subject to the following two conditions. (1) this device may not cause harmful interference, and (2) this device must accept any interference received, including interference that may cause undesired operation.

