



# 2021+ FORD F150 AMPS DASH MOUNT

## USER GUIDE

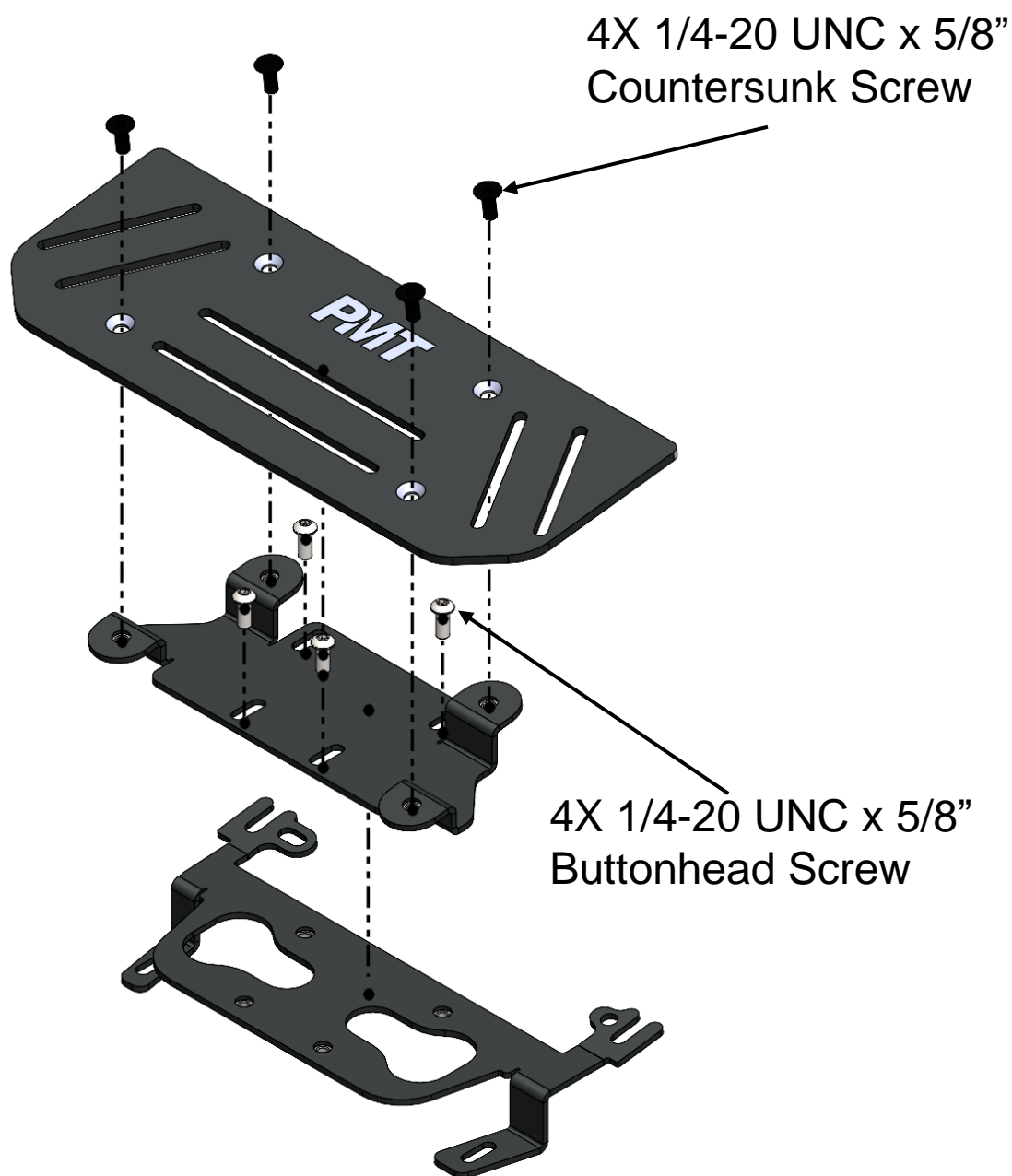
Description	Part Number
2021+ Ford F150 AMPS Dash mount	AS4.C235.014

### Product Mounting Disclaimer

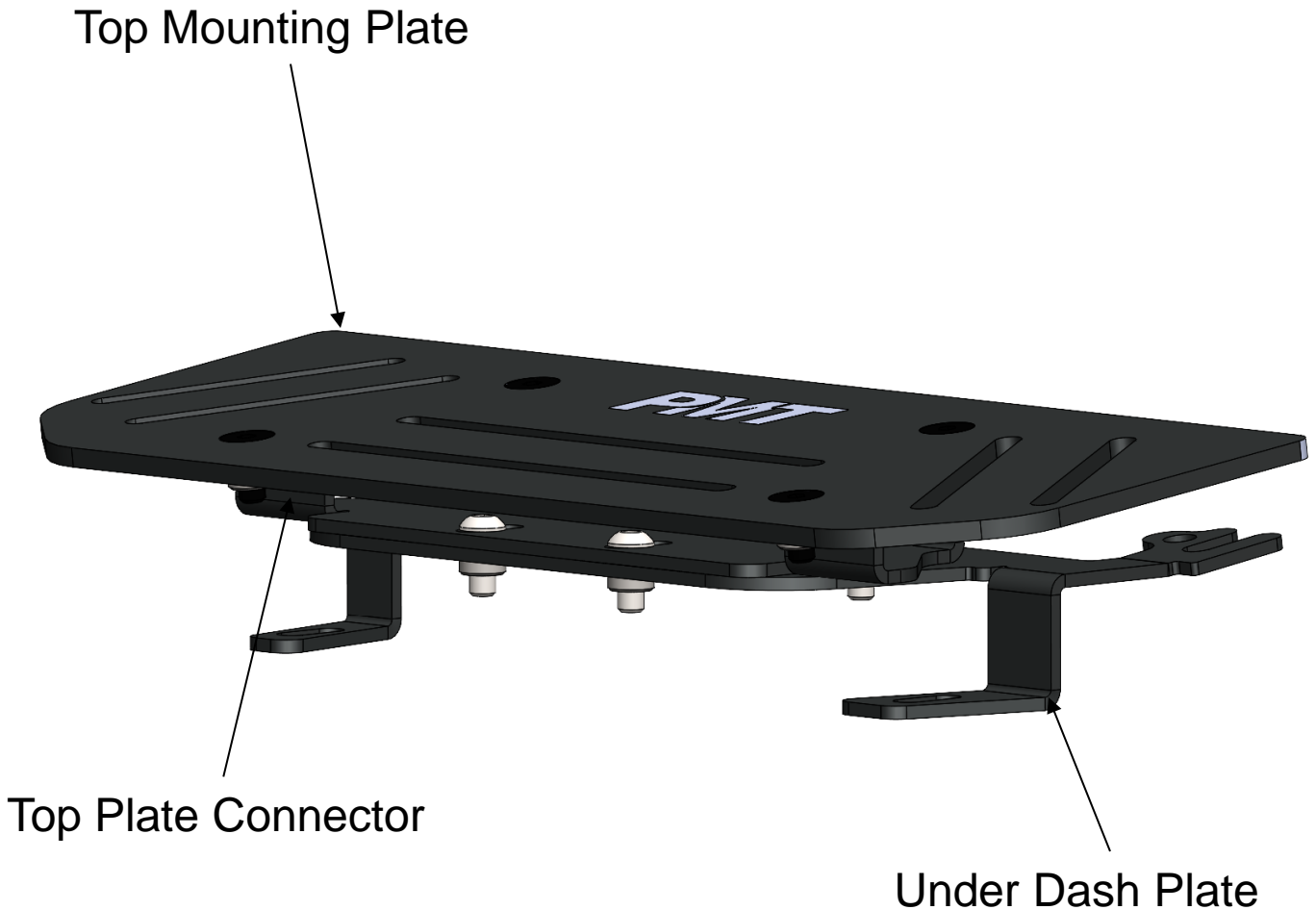
Precision Mounting Technologies Ltd (PMT) are not liable under any theory of contract or tort law for any loss, damage, personal injury, special, incidental or consequential damages for personal injury or other damage of any nature arising directly or indirectly as a result of the improper installation or use of its products in vehicle or any other application. In order to safely install and use PMT products full consideration of vehicle occupants, vehicle systems (i.e., the location of fuel lines, brake lines, electrical, drive train or other systems), air-bags and other safety equipment is required. PMT specifically disclaims any responsibility for the improper use or installation of its products not consistent with original vehicle manufactures' specifications and recommendations, PMT product instruction sheets, or workmanship standards as endorsed through PMT policies and EULA.



# HARDWARE DESCRIPTION



# PARTS DESCRIPTION



- Top Mounting Plate: This is the plate that all your device mounts will connect to.
- Top Plate Connector: This is the part that the top mounting plate directly connects to.
- Under Dash Plate: This is the part that goes underneath the OEM plastic dash panels.

# INSTALLATION INSTRUCTIONS

AS4.C235.014

2021+ Ford F150 AMPS Dash Mount

## Tools required:

- 7mm ratchet
- 5/32" Allen Wrench
- Ø 5/16" Drill
- Ø 1/8" Drill
- Masking tape

**Step 1:** Remove rubber tray and gently pry the speaker cover up and off the dash



**Step 2:** Remove the bolts holding the plastic trim panel on and set them aside for later



**Step 3:** Remove the bolts holding the speaker on, set them aside, then disconnect the speaker cable and set the speaker aside

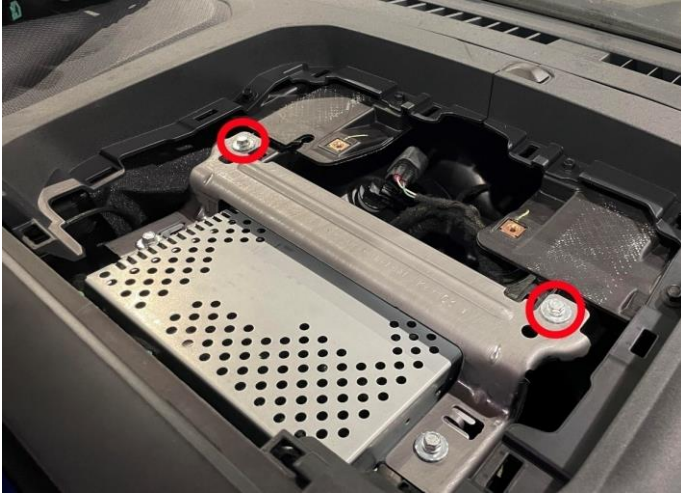




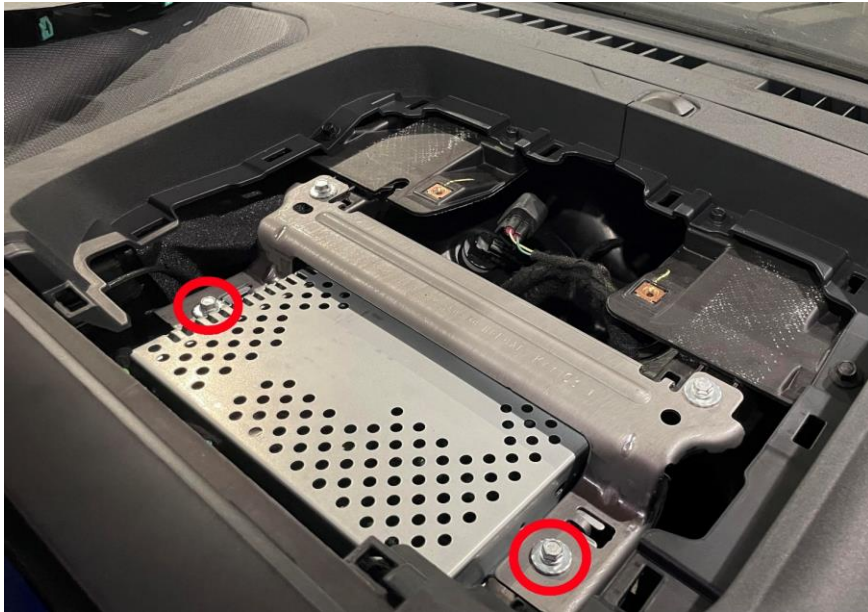
**Step 4:** Remove the plastic tray starting by prying at the front then moving to the back until all clips are disconnected



**Step 5:** Loosen the 2 upper bolts as shown below until there is about 1/4" to 3/8" of clearance between the washer and the OEM metal plate

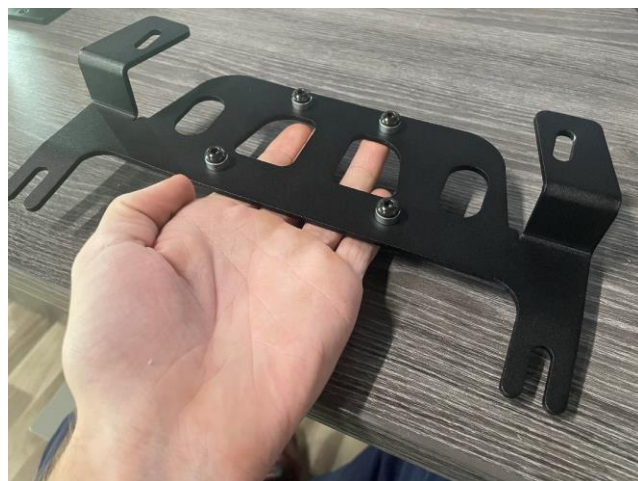


**Step 6:** Remove the 2 lower bolts and set them aside





**Step 7:** Install 4 of the buttonhead screws into the under plate as shown, these will be used to mark the locations to drill the holes in the plastic trim panel



**Step 8:** Install the underplate with screws as shown, sliding it on to the loosened screws. Slide the screws all the way into the back of the slots on the underplate as far as possible.

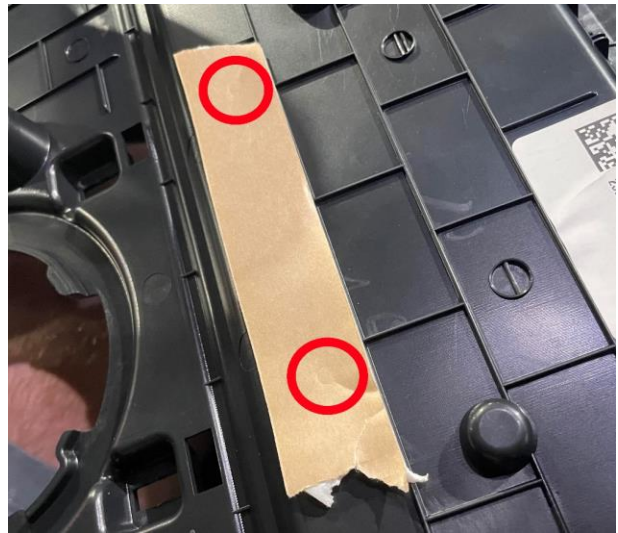


**Step 9:** Tighten the screws down so the plate will not move when pushed



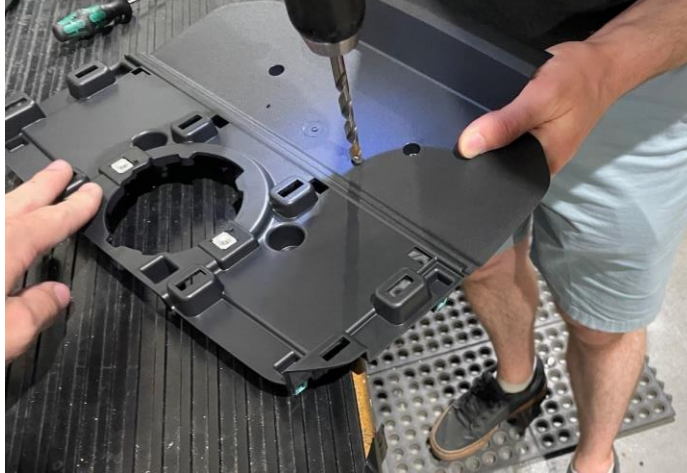
**Step 10:** Place a piece or pieces of masking tape on the underside of the plastic tray panel as shown, the masking tape will be marked by the screws in the underplate showing where to drill the holes.

Note: you can place masking tape to get the marks from the front and rear screws on the underplate or just mark either the front or the rear screws and use the under plate as a template to mark the locations of the other two



**Step 11:** Position the plastic tray panel in the dash as it would be installed and push down approximately where the screws in the under panel will be. Remove the underplate and remove the buttonhead screws, reinstall the underplate putting in all four OEM bolts

**Step 12:** using the 1/8" drill bit to pilot drill the holes marked with the tape. If the holes land on a plastic ridge a utility blade can be used to remove the ridges



**Step 13\*:** If you only marked one set of holes with tape drill out the holes you did mark with a 5/16" bit. Layout the underplate on the plastic trim panel and use two of the buttonhead screws to secure it in place, mark and drill the remaining two holes



**Step 14:** use a larger 5/16" drill bit to widen the holes. 5/16" is a recommendation, larger bits can be used for larger clearance if you feel your marked holes won't line up



**Step 15:** Reinstall the plastic tray and check that all the drilled holes lineup with the under plate before re-engaging the clips on the plastic tray. If the holes do not visually line up, then lift the tray piece and adjust the forward/back and left/right position of the underplate by loosening the OEM bolts and sliding it to the desired direction. You can also check the alignment by attempting to thread a button head screw into the underplate through the plastic tray

When all holes line up reinstall the plastic tray and OEM bolts that hold the plastic tray. Reconnect the speaker and reinstall the bolts that hold the speaker in. Reinstall the plastic speaker cover ensuring all clips re-engage



**Step 16:** Connect the top plate connector to the underplate using 4 of the buttonhead screws, these screws connect the two parts through the holes drilled in the plastic plate. Locating the top plate connector in the middle of its slots is a good starting point



**Step 17:** Install all the mounts you want to have on your dash mount onto the top mounting plate in the position you want them (such as mobile device holders) these can be changed later with minimal disassembly. There are potential interferences with the top plate connector depending on the mount being installed onto the top plate. If there is interference, we recommend using buttonhead type screws with nuts and washers (pictured below)





**Step 18:** Connect the top mounting plate to the top plate connector using 4 of the countersunk screws.



**Step 19:** Check the fit of the top mounting plate, if there is any interference you can change the position of the top plate by moving the top plate connector (middle component).

