



## Install and User Guide for PMT Printer in Consoles Solution 2020 and up Ford Interceptor Utility Vehicles (Printer cradle guide start on page 14)



Standard Interceptor utility printer in console solution with break-away armrest and Mousetrap Motion Mount

## Step 1: Remove steel hump plate



Remove four screws (by using 10mm socket)  
that secure the console mounting plate to the  
body

## Step 2



One bolt on each side  
(removing by 7mm socket)

-Remove the side plastic trim screws, then gently pulling it away and releasing the clips to remove the trim.



USB Port Module  
(Using T20 screw driver  
to remove 3 screws)

E-Brake Module

12v Outlets

-Once the side trim is removed, the centre section that houses the E-Brake module, USB port module and 12v outlets can also be removed. This is done by removing the screws of the E-braking module and gently pulling out releasing the clips.

### Step 3: Install new (supplied) Console Mounting Brackets

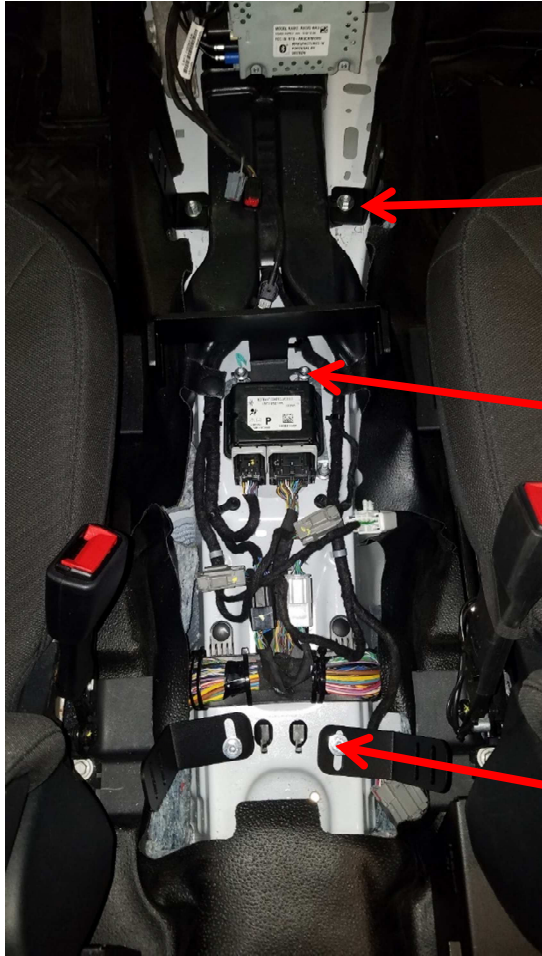


Reinstall the OEM trim, and let three cables come thru the E-brake cut out on the trim.

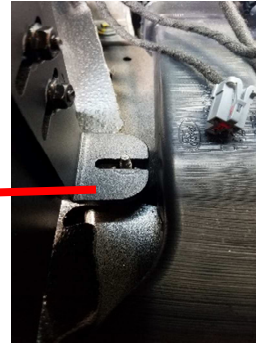
-Now that the steel plate is removed it will be helpful to trim back some of the plastic floor covering material.

Console area picture after trimming

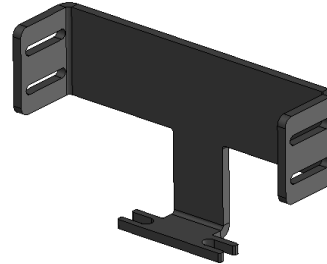
### Step 3 continued...



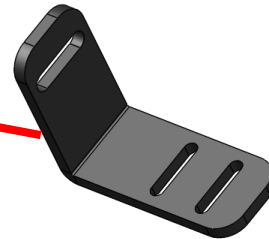
Console Area



-Install the front two brackets and secure them using the bolts that were used with the original steel hump plate.



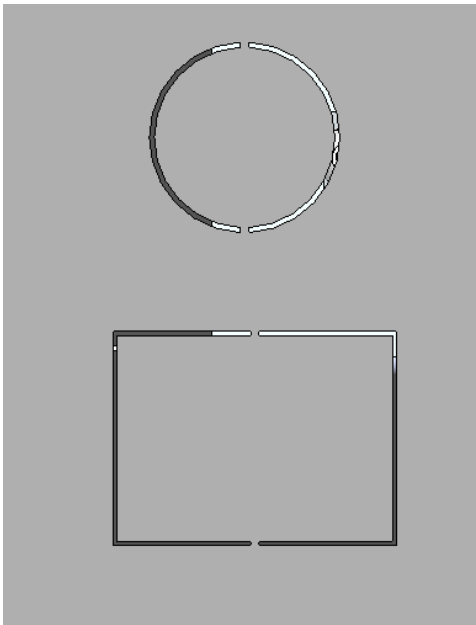
- Remove two bolts in the middle first. (By using 10mm socket)  
And then install the middle bracket



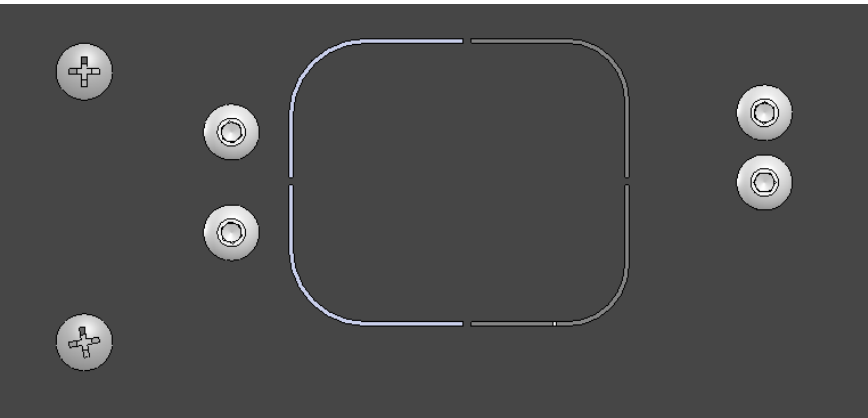
-Install the rear bracket

**DO NOT tighten completely until later in the installation.**

Step 4



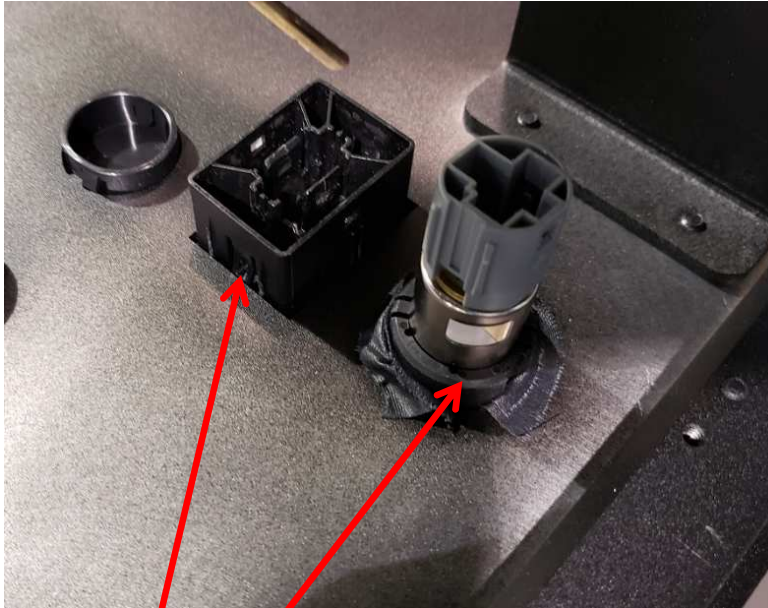
12v cigarettes lighter and USB module knock out



Option 2, E-Brake module knock out

Knock off the cut-out on the side panel if the E-Brake module, 12v cigarettes lighter and USB module need to be re-located.

Step 4 continued...



A. USB port module and 12v socket can be squeezed into the "knock-out" window.

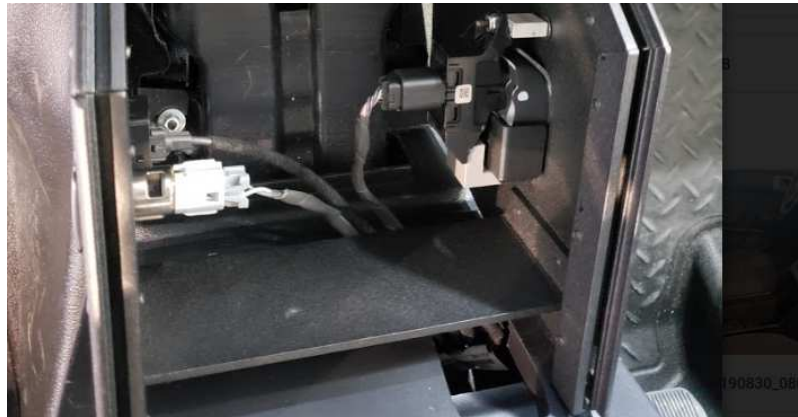


B. Put the E-Brake module on, using supplied #10-24x0.5" screws to tight top two screws. And using #10-24x1.5" and #10 nyloc nut to secure the bottom screw.

## Step 5: Install Console and side bolts



A. Put the console on



B. Connect back all three cables (E-Brake, USB, and 12V Socket)



C. Push the console completely in, and make it aligned with the dash.



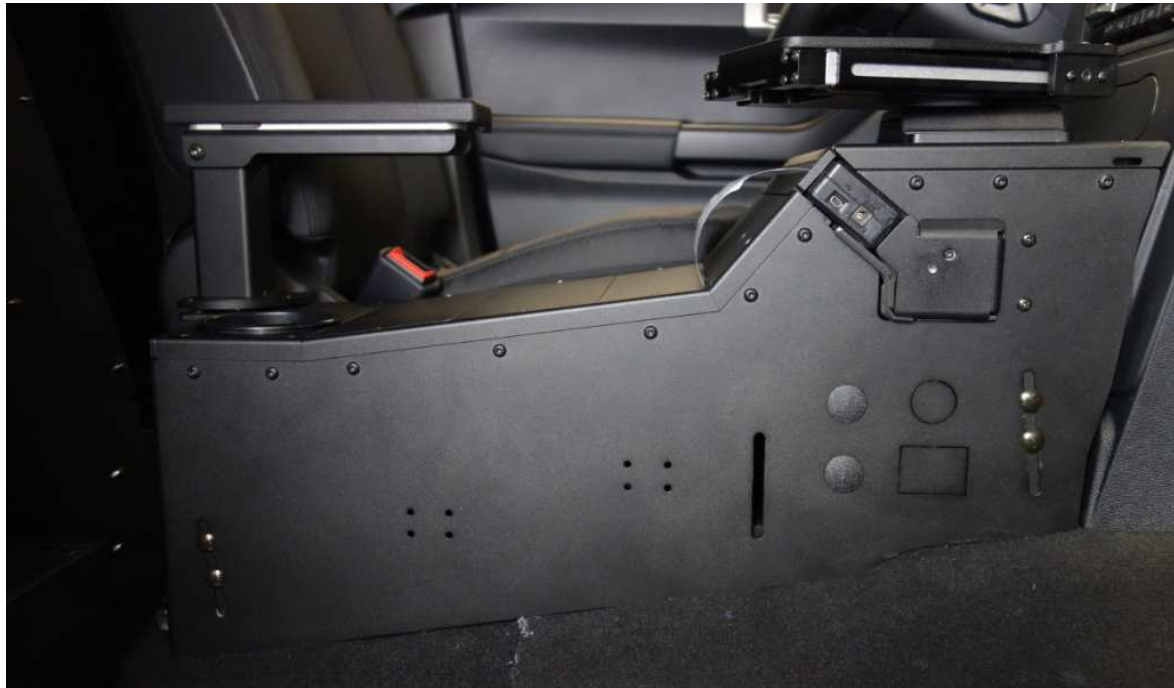
## Step 5: Install side bolts



-Install the side carriage bolts (supplied) that secure the console to the mounting brackets by sliding them down and holding with one hand, then use a plain washer, split lock washer, then the nut. Do not tighten until all bolts (12 in total) are installed and the position of the console is as desired.

Side carriage bolt

## Step 5 Continued...



Make sure all the mounting screws are tight and secured.

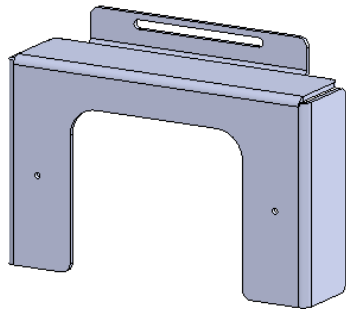
The console should line up with the dash as shown

## Step 6: Install the rear cable cover

### Option 1:



If the vehicle is equipped with the factory rear wire chase, Please use the wire cover come with the console. (shows below)

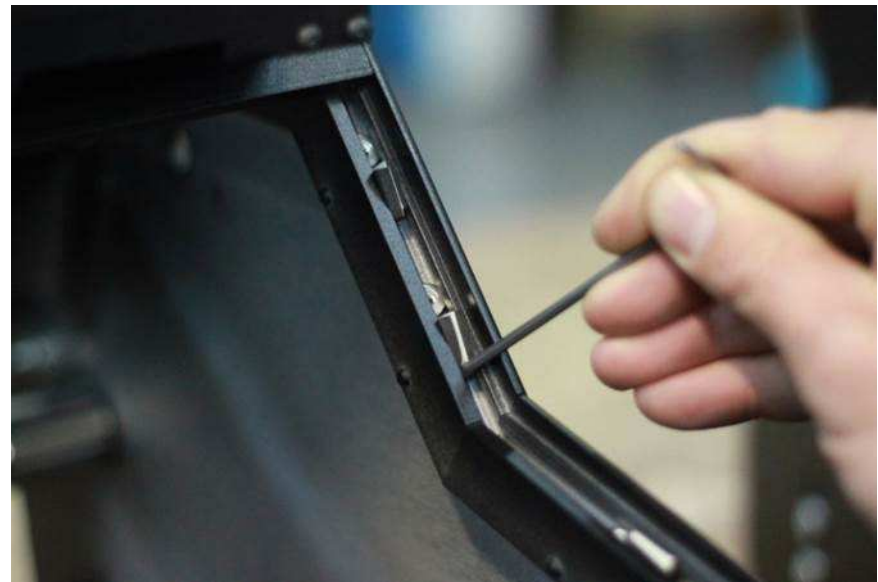


Install the supplied rear cable cover, and using four #10-24x1/2" screws to tight it with the tunnel.

## Step 7

- Install the optionally supplied: armrest/cup-holder plate, blank filler plates, radio faces plates, and laptop mounting plates.
- The plates are secured to the console using the supplied 10-24 nuts that are slid into the console rails, and then fastened with the supplied 10-24 x 5/8" screws.

OEM 12v sockets  
re-installed



Tip:  
PMT consoles use a "floating nut" style rail for attaching face plates to the console. In the consoles that have angled rails, foam inserts are used to help position the nuts for easier alignment with the face plates mounting screws. Use an allen key to position the foam and nut where desired, then mount the face plate.

## Step 8: Final adjustments

- Go over everything to make sure that everything is fully tightened and secure.
- Adjust positioning, and go over how the built in adjustments are used to maximize comfort, safety and functionality.



For more info:  
[www.precisionmounts.com](http://www.precisionmounts.com)  
[info@precisionmounts.com](mailto:info@precisionmounts.com)  
1-888-869-7652

**PMT**

## Printer Cradle User Guide



Use the two M2.5x10mm flat head screws (included in the hardware bag) to install the Brother Pocket Jet 7 series printer to the cradle



### Note:

- The Cradle only support Brother Pocket 7 series printer
- Loctite is recommended for any vibration situation

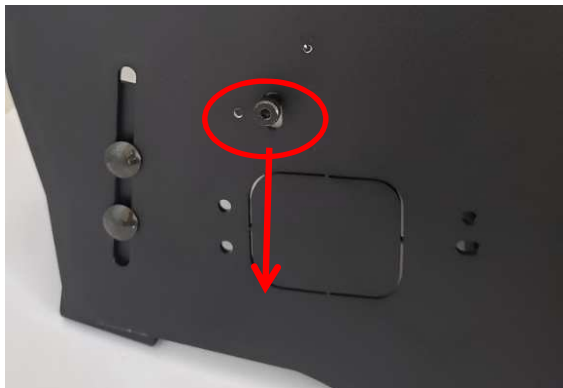


**To add or change printing paper,**  
Lift the holder Rod from one side, and add paper  
to it.  
Then put it back from one side to another





Feed the paper into the printer



Pushing down the releasing latch while sliding in/out the printer cradle







Make sure the printer cradle is pushed all the way in and is secured in the console