



Install Guide for 2013 Interceptor Radio Dashmount



Note:
Actual radio/siren controllers may be
differ from what is shown, however
install processes will be the same.

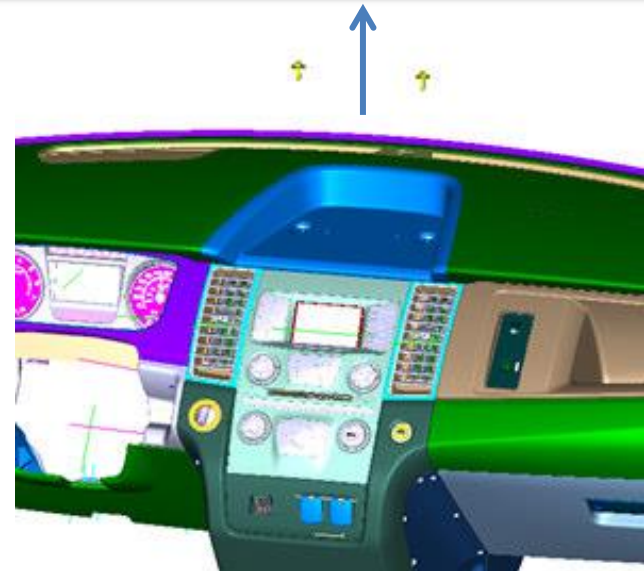
Step 1: Remove "Universal Top Tray (UTT)" from vehicle

Sedan:

-Remove the two bolts as pictured to the right, then gently pull the UTT towards you to release it from the clips.

Utility:

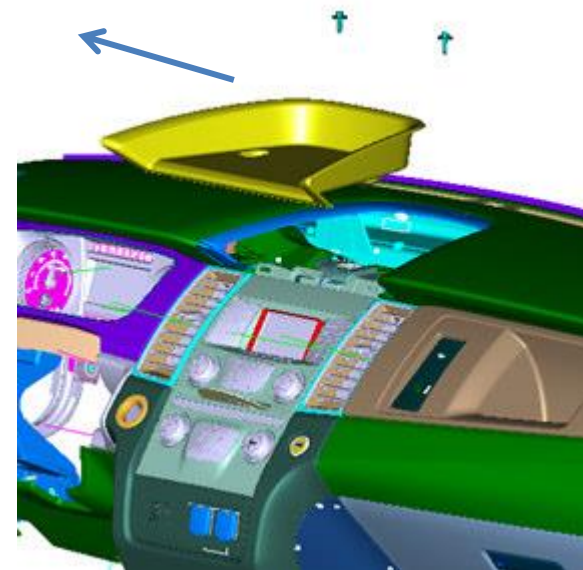
-Remove the single bolt from the UTT, then gently lift it up, releasing it from the clips.



Sedan pictured



Utility pictured



Sedan pictured

Step 2: Prepare UTT



Sedan UTT pictured

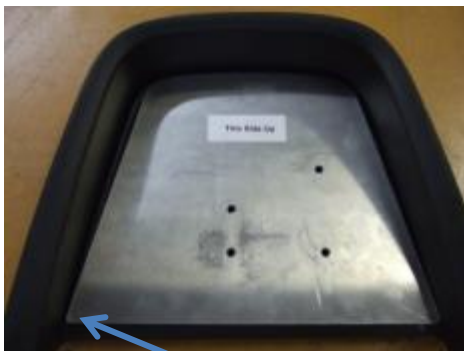


Utility UTT pictured

- Mark holes to be drilled into the UTT via the included dimensional drawing provided, and using the corners shown as the reference point, or;
- (optional)Place the drill plate* on the UTT as shown below.

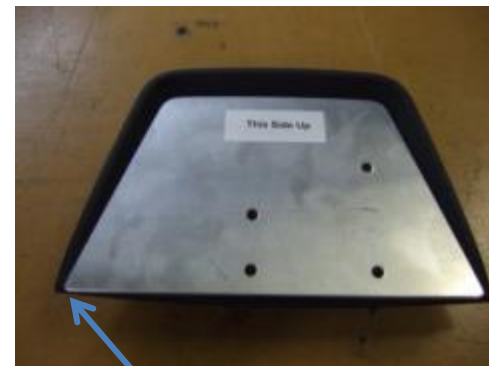
*the drill plate is available from Precision Mounting Technologies, but is not included with each Dashmount kit. If you require the metal plate, please contact Precision Mounting Technologies

Sedan pictured



Reference corner

Utility pictured



Reference corner

Step 3: Drill Holes

- Carefully drill marked holes using a 0.257" bit (1/4" clearance drill), ensuring correct positioning and alignment.
- (Optional)Clamp the drill plate into the UTT once it is positioned correctly.
- (Optional)Using a drill and a 0.257" bit, carefully drill 4 holes thru the UTT using the drill plate as a guide.



Sedan pictured



Utility pictured

Step 4: Attach Dashmount Bracket



Sedan pictured



Utility pictured

-Attach the Dashmount bracket to the UTT using 4, ¼-20 x 1" bolts, washers, and nylock nut as shown. The head of the bolts should start from the bottom of the UTT, and the nuts will install on the top surface.

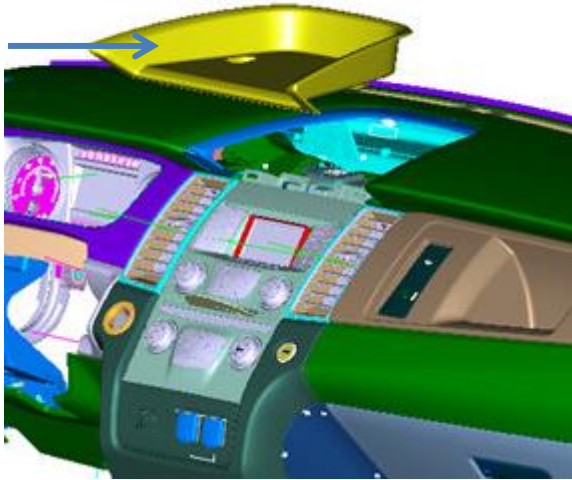


Sedan pictured



Utility pictured

Step 5: Re-install UTT with Dashmount Bracket

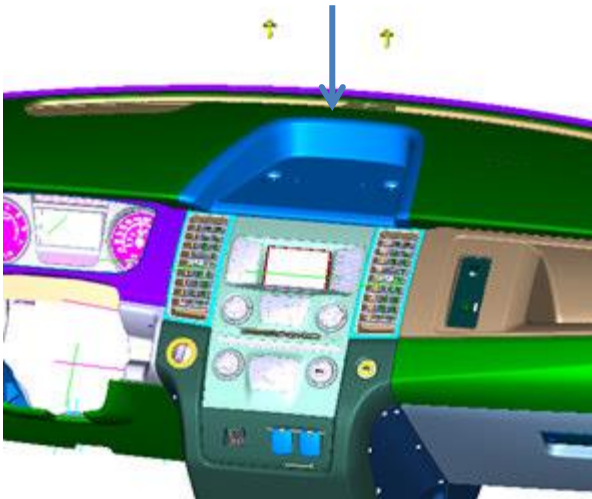


Sedan pictured

-Before re-installing the assembled unit, now is a good time to run any wiring needed for the radio, and/or the siren/light controller.

Sedan

-Slide the assembled unit forward and town into its clips, then re-install the 2 screws removed earlier.

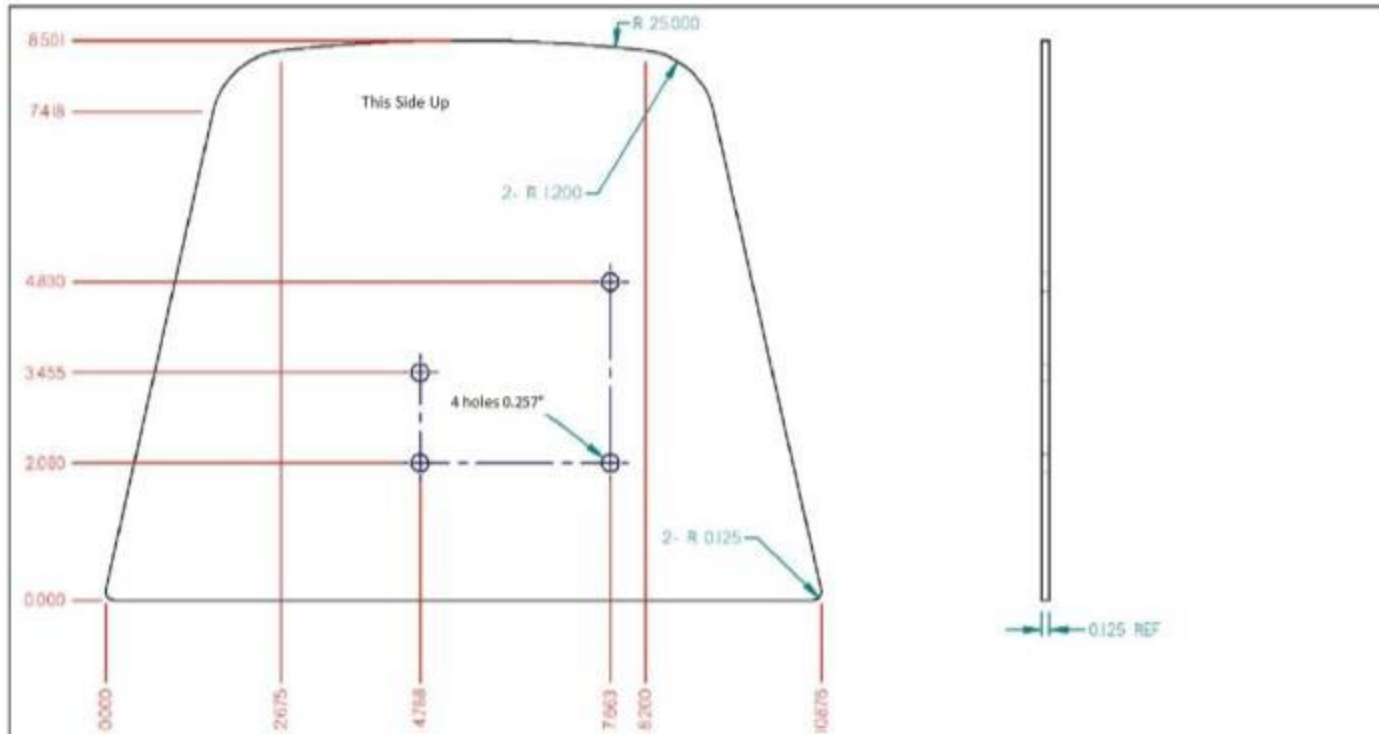


Sedan pictured

Utility

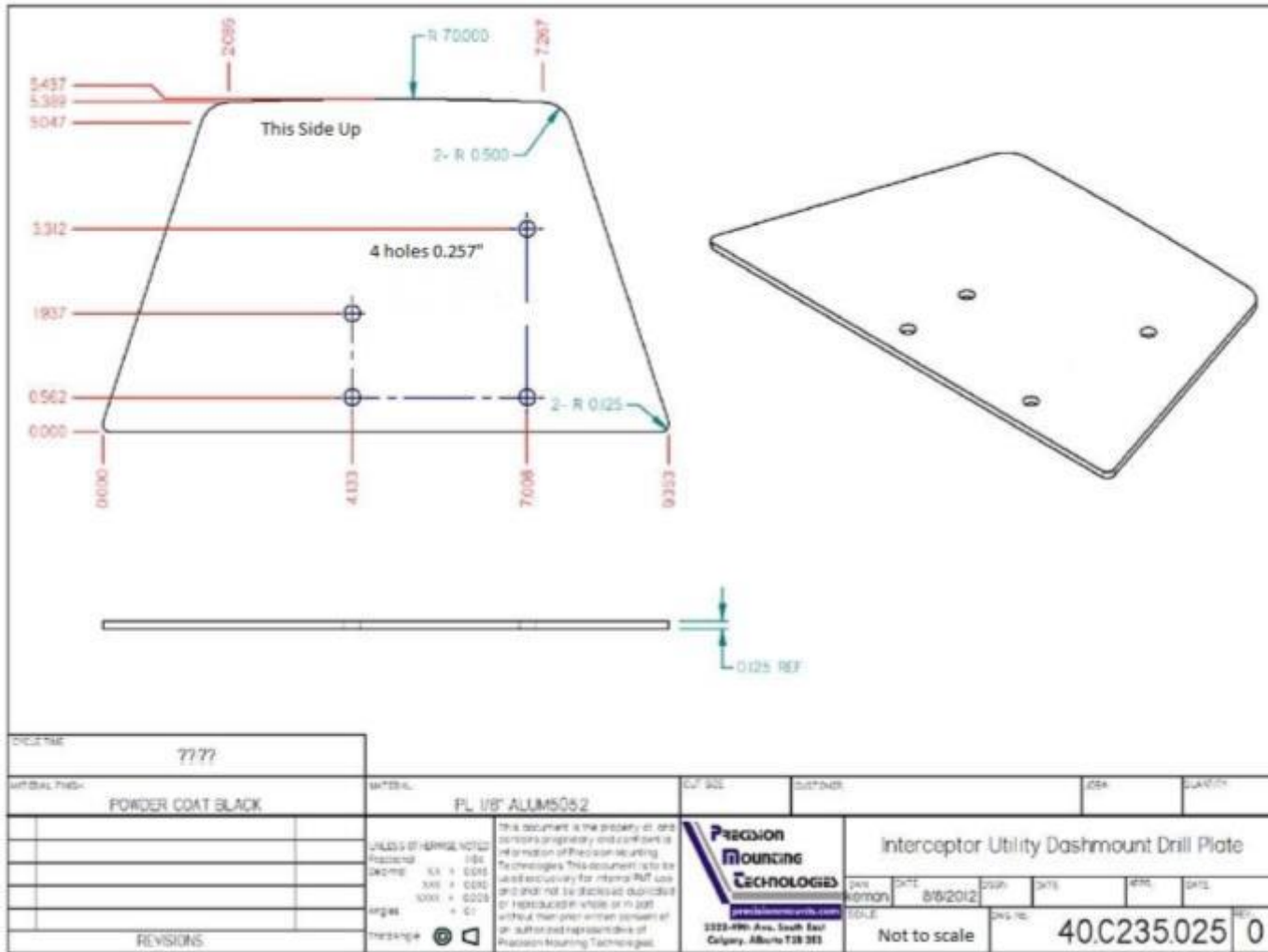
-Press the assembled unit down into its clips, then re-install the screw removed previously.

Sedan Hole Pattern



DESCRIPTION	????	MATERIAL	PL 1/4" ALUM5052	SUP. SIZE	OUTSIDE	JOB#	QUANTITY	
FINISH	POWDER COAT BLACK							
UNLESS OTHERWISE NOTED								
FRACTIONAL								
DECIMAL								
XXX + 0.010								
XXXX + 0.005								
ANGLES								
TOLERANCE								
REVISIONS								
		THIS DOCUMENT IS THE PROPERTY OF AND CONTAINS PROPRIETARY AND CONFIDENTIAL INFORMATION OF PRECISION MOUNTING TECHNOLOGIES. THIS DOCUMENT IS TO BE USED EXCLUSIVELY FOR INTERNAL PMT USE AND SHALL NOT BE REPRODUCED, COPIED, OR REPRODUCED IN WHOLE OR IN PART WITHOUT THE PRIOR WRITTEN CONSENT OF AN AUTHORIZED REPRESENTATIVE OF PRECISION MOUNTING TECHNOLOGIES.		Precision Mounting Technologies precisionmounting.com 3323-49th Ave. South East Calgary, Alberta T2B 3E3		Interceptor Sedan Dashmount Drill Plate DATE: 8/8/2012 DRAWN: korman CHECKED:		
		SCALE: Not to scale		DRAWING NO.: 40.C235.026		REV: 0		

Utility Hole Pattern



Step 6: Final Touches



Unit is offset for gear selector clearance



Unit folds up for access to vehicle info centre

- Install radio equipment, and ensure proper placement so that the units do not interfere with any controls of the vehicle.
- Ensure operators of the vehicle are aware of the functions and adjustments of the unit.